

Solutions for Pipe Repair

Reinforcement & Containment

Magic-Wrap



Distributed By :

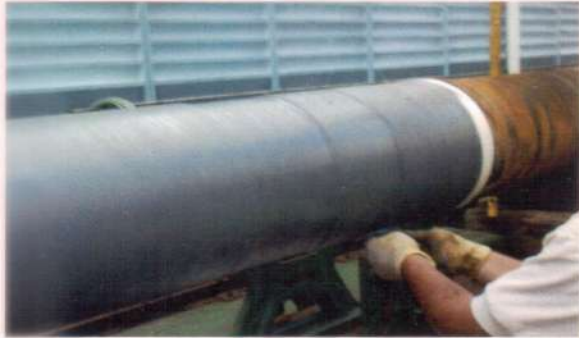


Metal Aid Engineers

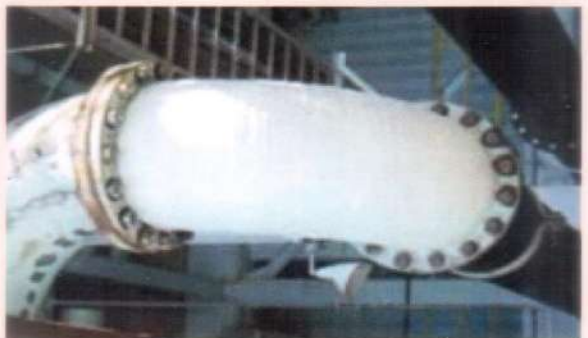
G-2, "JAINS BRINDAVAN"
#38, Brindavan Street,
West Mambalam, Chennai - 600 033
Cell : +91 94443 51612
Website : www.metalaid.in
E-mail : metalaidengg@rediffmail.com,
engineers.metalaid@gmail.com

*The New Miracle!
"Instant Repair and
Maintenance
System"*

Product Line



Heat Exchanger



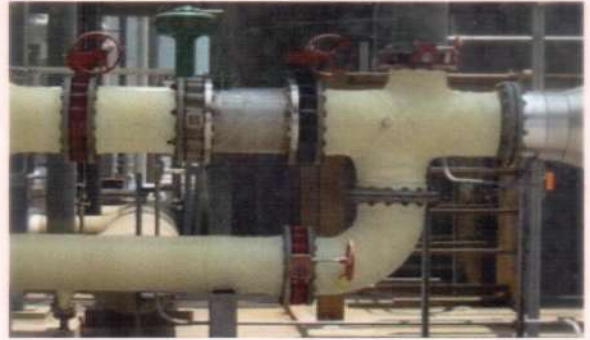
Mechanical Properties

Textile Strength	ASTMD638 Type1-8 Ply	36448 PSI: 2482 BAR
Flexural Strength	ASTMD790 Type1-8 Ply	26100 PSI: 1800 BAR
Compressive Strength	ASTMD695 Type1-8 Ply	24846 PSI: 1713 BAR
Dielectric Strength		16060 Volts
Lap shear Strength	ASTM D5379	900 PSI: 62 BAR
IMPACT RESISTANCE	ASTM G14/G62	123 feet.lb (167 j)

**Bell & Spigot Repairs
Iron and PCCP**



Cooling Water Header



Chemical test result (After 60 Days)

Temperature Vs Time

Chemical test result (After 60 Days)		Temperature Vs Time		
Solution	Surface Changes	Average Temperature	Approximate work time	Return to service time
Sulphuric Acid 30%	None	35°C	3 Minutes	23 Minutes
Hydrochloric Acid 10%	None	21°C	8 Minutes	28 Minutes
Sodium Hydroxide 20%	None	16°C	10 Minutes	85 Minutes
Gasoline	None	10°C	14 Minutes	162 Minutes
Fuel oil + Water	None	06°C	17 Minutes	182 Minutes
Gas / Air	None	02°C	20 Minutes	381 Minutes

Solutions for Pipe Repair

What is Magic-Wrap?

Magic-Wrap is the original, easy to use, quick action solution. When properly applied, it will repair damage through everyday wear or when unexpected emergencies occurs.

Magic-Wrap fiberglass cloth is pre-impregnated with a resin which is activated by salt or fresh water. Packaged in a hermeticatjy sealed foil pouch, it's ready to use and does not require any measuring or mixing. This ssystem, when used with the appropriate primary patch, it enables you to repair and reinforce virtually any diameter pipe in minutes. Magic-Wrap reduces down time, saving you thousands in parts and labour.

Magic-Wrap is safe to use, Non-Toxic, Non-Combustible and odourless. This system can not only restore a pipe to its original PSI rating but also can actuary make the repair area stronger than the original pipe.

Applications :

- * Corrosion Protection
- * Irregularly Shaped Repairs
- * Under Water Repair
- * Repairs Pipes from 1/2" to 54"
- * Force Mains and Gravity Lines
- * Riser Restoration
- * Reinforcement of Corroded or Damaged Pipes
- * NSF 61 Approved for Potable Drinking Water
- * Joint and Tee Repair
- * Emergency Repair
- * Under Pressure Repair
- * Number of Piles : 8
- * Fabrication Method : Wet Lay up
- * Curing time at 75° F : 30 minutes

Roughen the area

1



Soak Magic-Wrap in water for 20 seconds

2



Wrap in spiral manner

3



Squeeze and mold

4



For Plugging holes in tanks, etc., after soaking in water, the tape has to be unraveled and made into a ball and plugged into the opening. Apply continuous pressure against the surface for about 8-10 minutes.

Quick Action

With an initial setting time of only 30 minutes (75° F), Magic-Wrap is excellent on COPPER, STEEL, SS, PVC, CLAY, CONCRETE, RUBBER and MORE. It's AMAZINGLY VERSATILE !



Metal Aid Engineers

G-2, "Jains Brindavan" #38, Brindavan Street, West Mambalam, Chennai - 600 033

Cell : +91 94443 51612 Website : www.metalaid.in

E-mail : metalaidengg@rediffmail.com, engineers.metalaid@gmail.com

BETTER MAINTENANCE PRODUCTS THROUGH RESEARCH